

KIT PART NUMBER 5277463

INSTRUCTIONS FOR INSTALLING A PLATEN ASSEMBLY IN A BFV-2 BILL VALIDATOR

CHECK THE PARTS RECEIVED IN THE KIT WITH THE PARTS LIST IN THESE INSTRUCTIONS. IF ANY PARTS ARE MISSING, CONTACT NATIONAL VENDORS' PARTS DEPARTMENT IMMEDIATELY.

Read these instructions carefully before installing the kit.
Retain these instructions for part numbers and for future reference.

This kit contains the following:

PART NUMBER	DESCRIPTION	QUANTITY
5277462	Platen Assembly	1
5264160	Shaft - Roller	1
5264408	Ring - Retaining	2
5277464	Instructions - Installation	1

PLATEN ASSEMBLY REMOVAL.

Refer to Figure 1.

1. Squeeze the latch bar tabs together and pivot the platen assembly away from the frame.

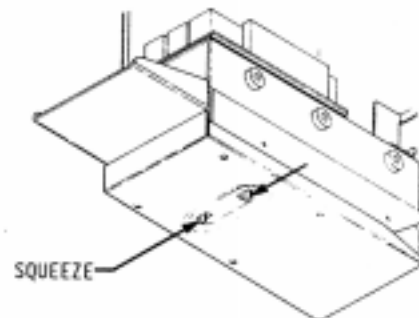


Figure 1.

Refer to Figure 2.

2. Remove one "E" type retaining ring (1) from the end of the pivot shaft (2).
3. Slide the platen assembly (3) to the right and tilt the left side of the platen assembly away from the bill guide (4) and lift clear.

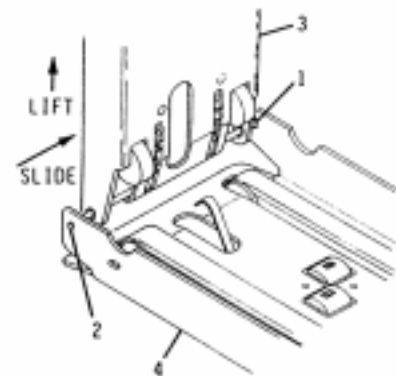


Figure 2.

DISASSEMBLY OF PLATEN ASSEMBLY.

Refer To Figure 3.

1. Remove four screws (1) securing the platen assembly cover (2) and remove the cover.
2. Grasp the latch spring (3) and pull it from between the latch bars (4).
3. Push each latch bar toward the opposite side of the platen.
4. Remove one latch bar then the other by angling each toward the front of the bill guide and lifting out.
5. Apply downward pressure to the anti-retrieval arm (5). Then rotate the pressure block (6) toward the rear of the platen assembly. Slide the pressure block to the right.
6. Rotate the anti-retrieval arm about the shaft (7). When it stops against the long head roller arm (8), pull forward and lift it out.

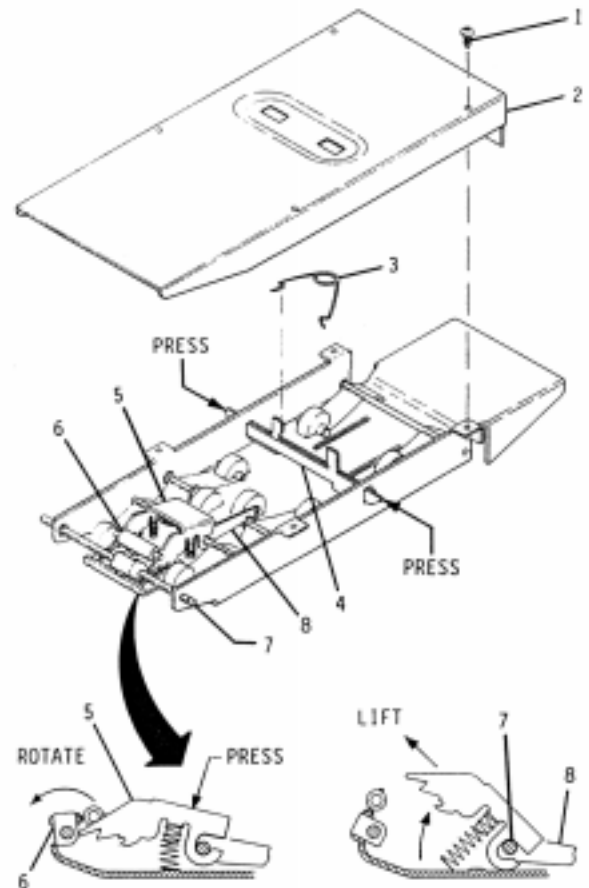


Figure 3.

Refer To Figure 4.

7. Remove one retaining ring (12) from the end of the roller shaft (7). Slide the shaft to the side and lift it out along with the roller arms and spring.

CAUTION

The Pressure springs will fly out of the platen assembly when removed. Place a hand or rag over the spring during removal.

8. Remove the pressure spring (9) and roller (10) by applying pressure to the short end of the pressure spring. This forces the pressure spring under the retainer (11). Repeat Step 8 for each pressure spring and roller.

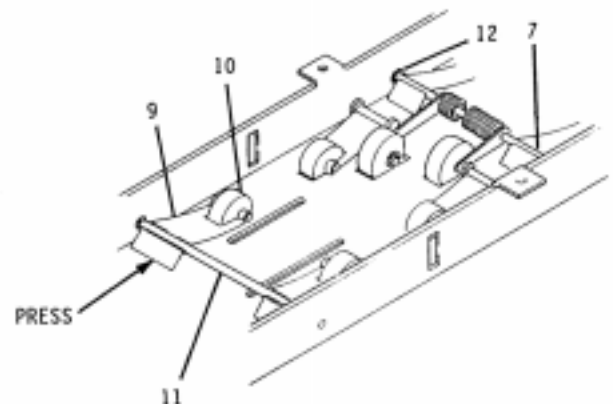


Figure 4.

ASSEMBLY OF PLATEN ASSEMBLY.

Refer To Figure 5.

1. Check the platen for burrs or damage. Use a fine grade emory cloth to remove burrs.
2. Inspect the pressure springs (1) to ensure they are formed correctly.
3. Lightly coat the pressure roller shaft (2) with molydisulfide grease. Then place the roller in the spring.
4. Align the pressure spring with the side of the platen. Press the end of the spring under the retainer (pivot post or shaft)(3).

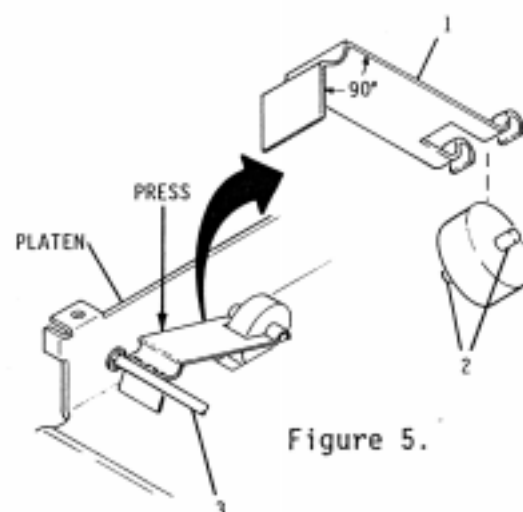


Figure 5.

Refer To Figure 6.

5. Insert roller shaft (4) in the hole in the platen and slide to the side. Insert the other end of the shaft into the hole in the opposite side of the platen. Be sure the spring applies pressure to the roller arms. The rollers should protrude through the slots in the platen.
6. Install a retaining ring in the slot in the roller shaft (4).
7. Capture the shaft (4) with the slots in the sides of the anti-retrieval arm (5).
8. Using a finger, press each spring (6) on the anti-retrieval arm over the raised boss in the platen.
9. Rotate the pressure block (8) about the pivot shaft (7) and toward front of the platen. Then slide it to the center of the platen.
10. Apply downward pressure on the anti-retrieval arm (5). Rotate the pressure block (8) toward the front of the platen until it rests on top of the anti-retrieval arm.

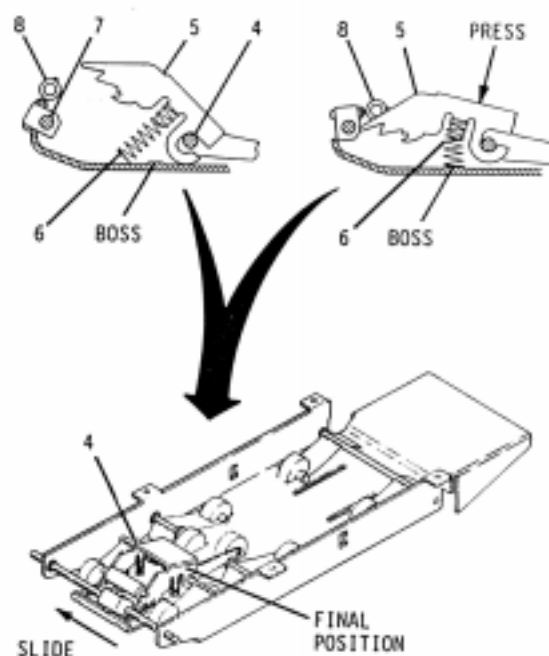


Figure 6.

11. Slowly release pressure on the anti-retrieval arm (5). The anti-retrieval arm and pressure block should remain in this position but under pressure from the springs (6) on the anti-retrieval arm.

Refer To Figure 7.

10. With the tang of the latch bar (9) up, slide the square end of the bar through the slot in the side of the platen. Perform this step for each latch bar.
11. Align both latch bars (9) perpendicular to the sides of the platen. Slide the angled end of each latch bar through the slot in the opposite side of the platen until it stops.
12. Compress the ends of the latch spring (10). Insert the spring ends between the latch bar tangs. Release the ends of the spring.
13. Place the cover (11) on the platen and secure it with four screws (12).

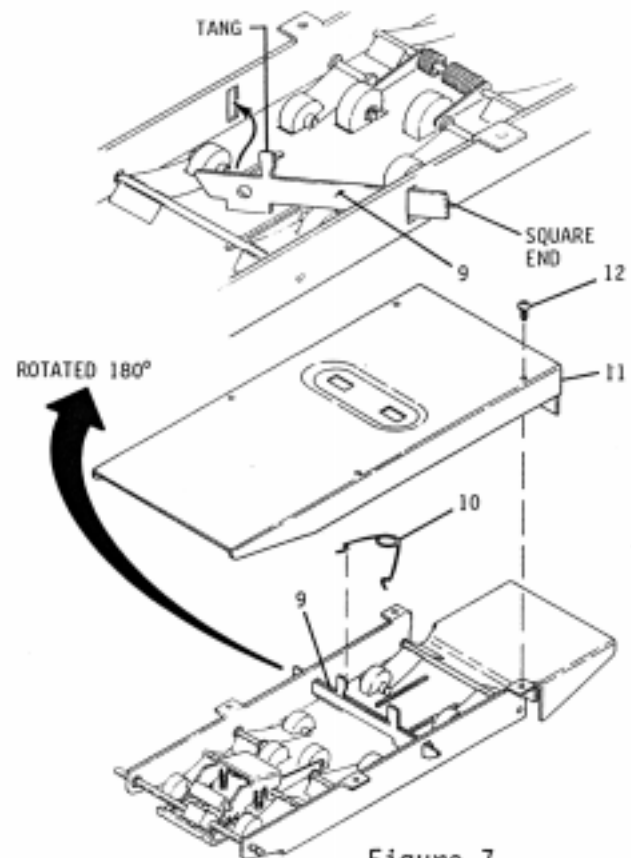


Figure 7.

ANTI-RETRIEVAL ARM TEETH ADJUSTMENT.

Refer To Figure 8.

1. Turn the adjustment screw (1) to raise or lower teeth of anti-retrieval arm (2). CCW raises the teeth. Clearance between the teeth and the platen should be .020in.

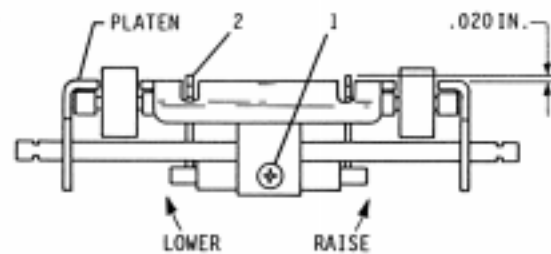


Figure 8.

PLATEN ASSEMBLY INSTALLATION.

Refer To Figure 9.

1. Tilt the platen assembly (1) slightly. Insert the platen pivot shaft (2) into the hole in rear side of the bill guide (3).
2. Lower the opposite side of the platen assembly. Insert the platen pivot shaft into the hole in the opposite side of the bill guide.

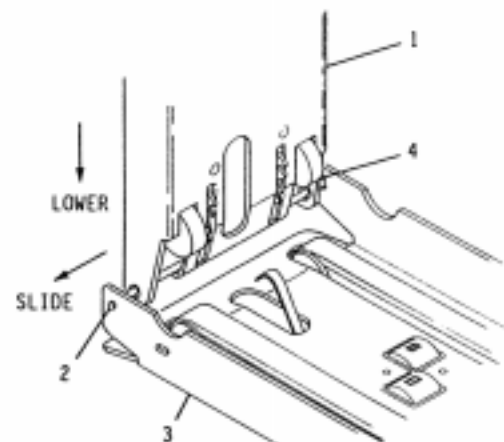


Figure 9.

3. Install an "E"-type retaining ring (4) in the grooves in each end of the platen pivot shaft.
4. Close the cover and the platen assembly on the bill validator. The latch bars must protrude through the slots on the sides of the bill guide.